

500i Laser Ablation System

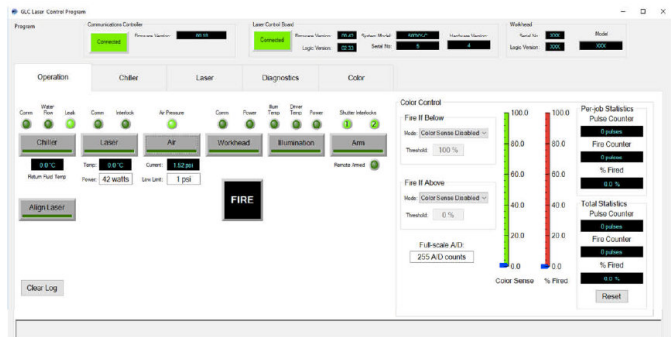
Laser Ablation System integrates a highly stable and reliable 500W IPG Photonics™ Ytterbium-doped fiber laser, control systems, quick-disconnect fiber coupling mechanism, purge air generator, water chiller, and safety interlocks. Operational controls are simple and intuitive. The caster mounted laser source unit is equipped with optional lifting eyes and forklift sleeves. The source cabinet has a crated shipping weight of 1100 lbs. and measures 48" L x 23" W x 40" H.



500i Laser Control Panel (LCP) Touch Screen

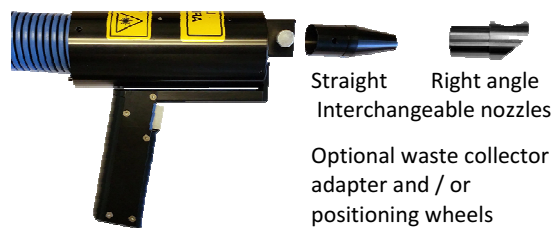
The 500i cabinet mounted LCP provides control functions and status information through five (5) screens that are accessible via tabs on each screen. All screens display communication link status of the Mk5 LCB (Green = Connected; Red = Disconnected), firmware versions, and model/serial number information. Active buttons on the screens allow the user to engage system functions when appropriate. The screen tabs are as follows.

- Operation: screen indicates status and enables the user to start system components, set power level, and engage surface recognition features
- Chiller: screen displays status of chiller operation
- Laser: displays status of operation, operational settings, and fault indicators
- Diagnostics: allows read/write communications with the PIC and FPGA firmware
- Color: interface with detection system to generate primer, metal-substrate, and threshold tables and control parameters.



Model HS Tool

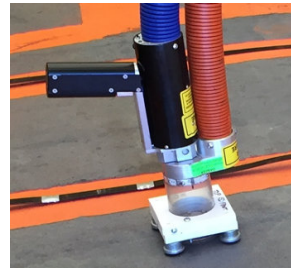
The Model HS refractive (rotary) handheld scan tool is configured with a pistol grip, arming control, and metal surface protection. It generates a high irradiance 1 cm swath width. It attaches to an umbilical assembly up to 50 m long and provides the smallest and lightest weight tool on the market ideal for handheld operation and for access to confined spaces. An optional front "headlight" facilitates use in un-lit locations.



46741 Fremont Boulevard, Fremont, CA 94538 408-947-1181

Model 2X, 3X, 4X Tools

2 to 4 cm wide swaths for applications requiring greater throughput with moderate irradiance (delivered power). Shown here with wheel adapter to assure optimum ablation positioning and minimum operator stress. Also shown is the optional waste collector adapter and (red) waste hose leading to external vacuum system.



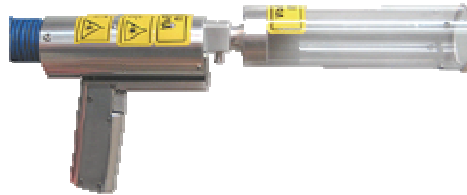
Model D Tool

Model D refractive (rotary) handheld scan tool combines the advantages of portable operation with full color-selectivity control via electro-optic processing in the tool and laser source unit. Model D has a 4 cm swath. Sensor lighting in the circular wheeled adapter enables selective, layer-by-layer coating removal.



Model VLSA Tool

Model VLSA (Very Large Scan Area) features a 4 cm wide swath for lower irradiance applications. Ideal for metallic and composite mold cleaning and debonding certain protective coatings.



Remote Safety Box

Optional unit includes: ready, emission and fault indicators, safety and emergency stop controls, communications and interlock ports. It permits a shut down remotely from the laser supply unit.

